



# THIELMANN.

PRODUCT INFORMATION

## 1 - AMAZON-ADVANTAGES

- AVETTA tested 
- COUPA europe-wide available
- PTW trained
- Night and weekend installation
- Own safety department
- Work according amazon standards
- Planning support
- 360° sourcing (we solve your needs)

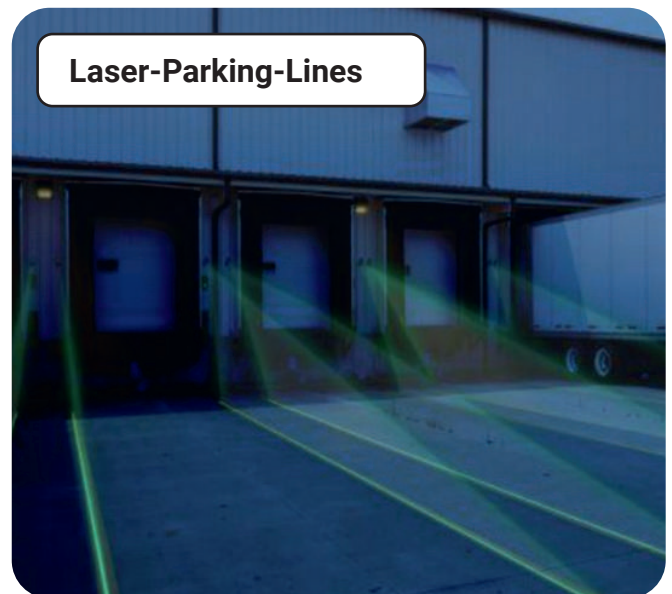
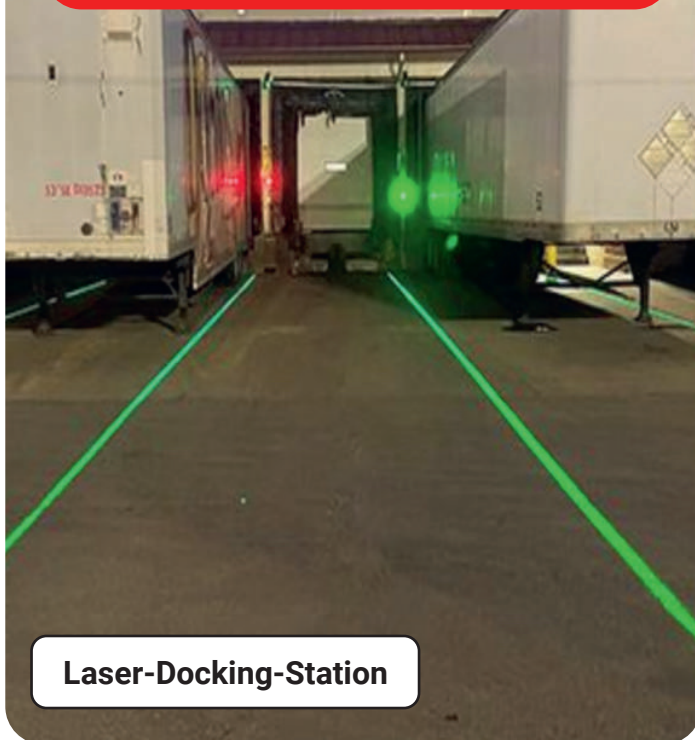
**THIELMANN.  
HOTLINE**



**+49 (0)173 3937223**



**[o.mertens@thielmann-web.de](mailto:o.mertens@thielmann-web.de)**





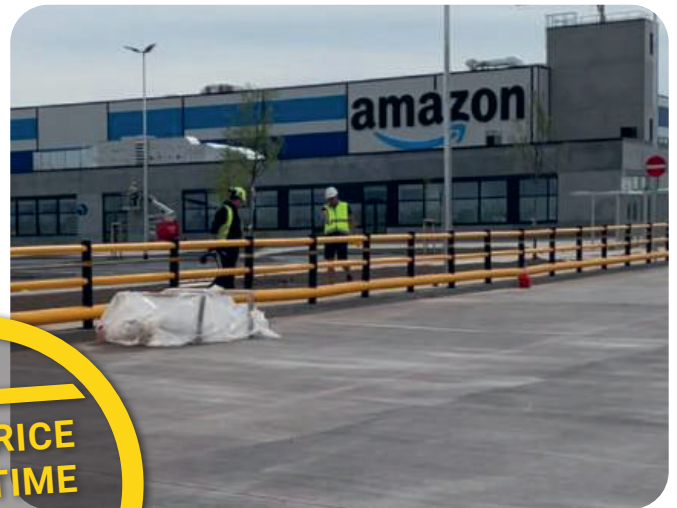
# THIELMANN.

PRODUCT INFORMATION

## 2 - FLEXIBLE SAFETY BOLLARDS



## 3 - POLYMER BARRIERS



**BEST PRICE  
& LIFETIME  
GUARANTEE**





# THIELMANN.

PRODUCT INFORMATION

## 4 - PARKING GARAGE SPECIALIST

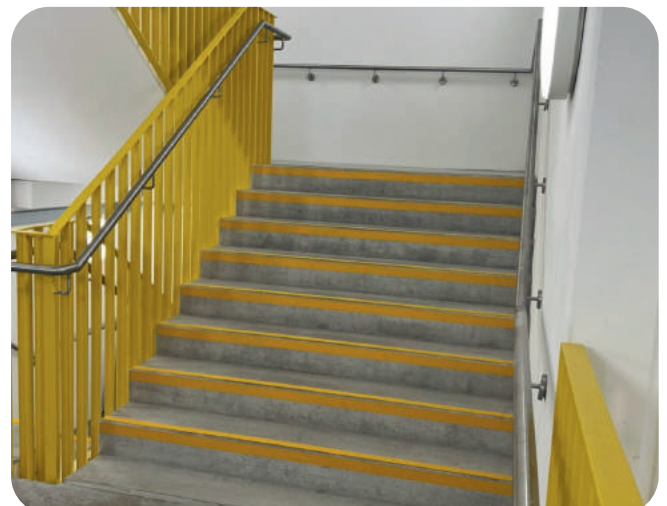
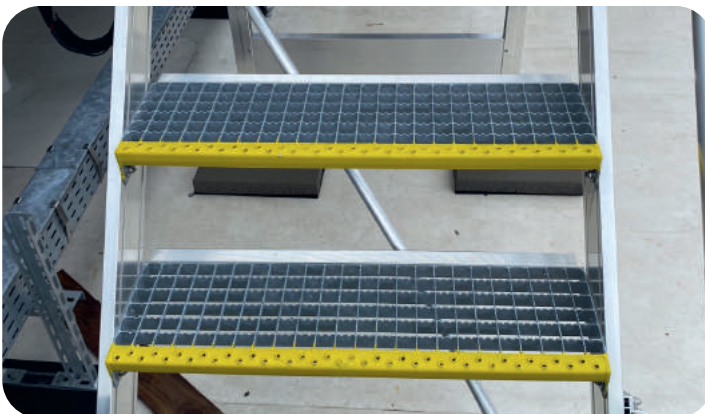


MARKINGS - BOLLARDS - SPEED BUMPS ...

## 5 - SAFETHIE SOFT



## 6 - STAIR EDGE ANTI SLIP





# THIELMANN.

PRODUCT INFORMATION

## 7 - RAMP LABELING



## 8 - PARKING AREA RETRO FIT



## 9 - SIGNING





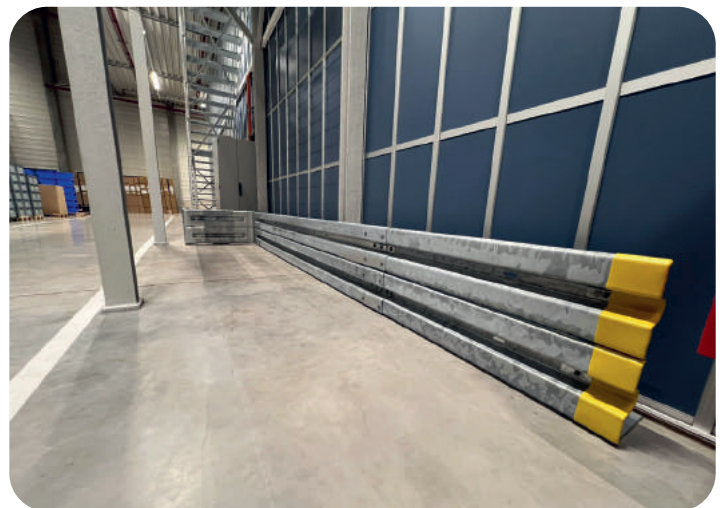
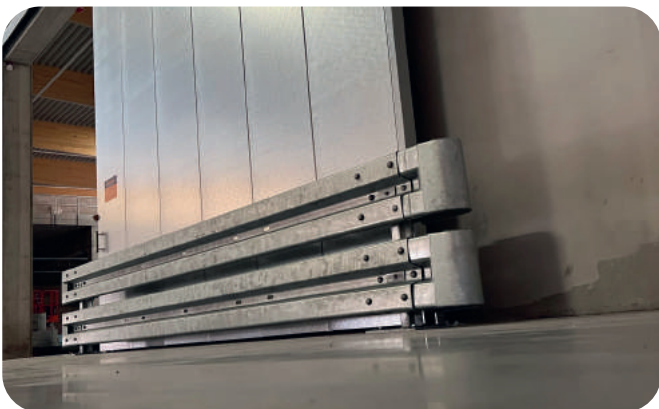
# THIELMANN.

PRODUCT INFORMATION

## 10 - MARKING | DEMARKING | REMODELING



## 11 - TRAFFIC BARRIERS





# THIELMANN.

PRODUCT INFORMATION

## 12 - SPEEDBUMPS



## 13 - YARD SECURITY DISTRIBUTION CENTER

### PARKING PRODUCTS



## 14 - BERLIN PILLOW





# THIELMANN.

PRODUCT INFORMATION

## 15 - CONCRETE FOUNDATION



Smoking cabin



Amazon-Monument-Sign

## 16 - COLUMN PROTECTION





# THIELMANN.

PRODUCT INFORMATION

17 - NEW BUILDING/REDESIGN TRUCKER LOUNGE



- Location-Logo - Ø 2500 mm -



**THIELMANN.**  
**HOTLINE**



**+49 (0)173 3937223**



amazon  
**Chime**

**o.mertens@thielmann-web.de**